

# SUPERIOR

Color Selector



# MMAN

**Corporate Office**

P.O. Box 397  
Fortson, GA 31808  
800.755.0825

**Atlanta Plant**

2265 Lithonia Industrial Boulevard  
Lithonia, GA 30058  
800.755.0824

**Master Wall West**

810 West Utah Ave. #1  
Payson, UT 84651  
888.492.0023



**Master Wall Inc.**  
*Building a Culture of Excellence*

*masterwall.com*

*Superior Finishes Superior Elastomeric Superior Elastomeric Plus Roller-flex Elasto-flex*



**Master Wall Inc.**  
Building a Culture of Excellence

# Superior Color Selector

 #420 White	 #840 White	 #108 Burns White	 #143 White Waters
 #413 Amarillo White	 #206 Natural White	 #482 Magnolia White	 #406 Silver Fox
 #102 Seamist	 #340 Mockingbird	 #380 Mountain Haze	 #368 Driftwood
 #310 Ash	 #210 London White	 #464 Lunar	 #104 Clay
 #610 Dutch Cream	 #400 Creme	 #460 Amarillo	 #107 Beach Sand
 #475 Chalk	 #473 Truffle	 #155 Tripoli Tan	 #105 Gillam
 #410 Beech	 #120 Salmon	 #408 Sandlewood	 #909 Victorian
 #900 Adobe	 #616 Tan	 #930 Pink Champagne	 #227 Brown

ALL COLORS SHOWN HERE ARE INTENDED TO SHOW APPROXIMATE COLOR OF THE FINISH. Do not use this color chart as the final selection as colors are affected by age, texture, lighting conditions, heat and application processes. Color swatches will vary in color and finish to the actual product due to jobsite conditions and methods of applications.

# Superior Color Selector



**Master Wall Inc.**  
Building a Culture of Excellence

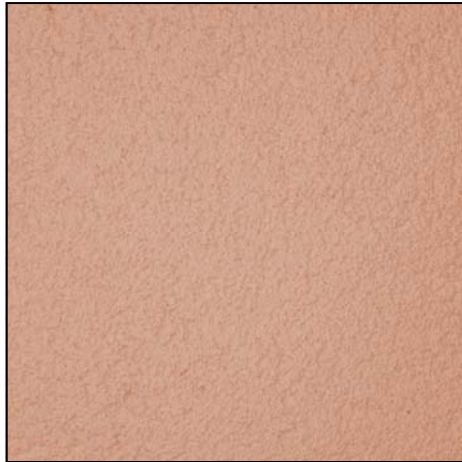
 #461 Pampas White	 #301 China White	 #609 Linen	 #101 Polar White
 #22 Kool	 #106 Sky	 #505 Pearl Gray	 #504 Oyster Gray
 #360 English Fog	 #403 Weathered	 #150 Iris	 #330 Dove Gray
 #933 Stow	 #522 Antique Ivory	 #559 Mellow	 #611 Flax
 #208 Sandle Beige	 #500 Egg	 #463 Calvary	 #402 Par
 #613 Boca Raton	 #660 Taupe	 #606 Fuzzy Peach	 #341 Silky White
 #934 Pebble Sand	 #180 Beige	 #618 Light Beige	 #372 Soft Plum
 #517 Wooden Oar	 #920 Pine Cone	 #927 Scarlet Red	 #646 Sage

Actual color selection should be made from a 1'x1' sample of each color, texture and finish made by the applicator who is actually completing the project. Master Wall manufactures 100% pure acrylic finishes, "The Quality is in the Pail"

# Superior Finish Textures



Perfect Texture



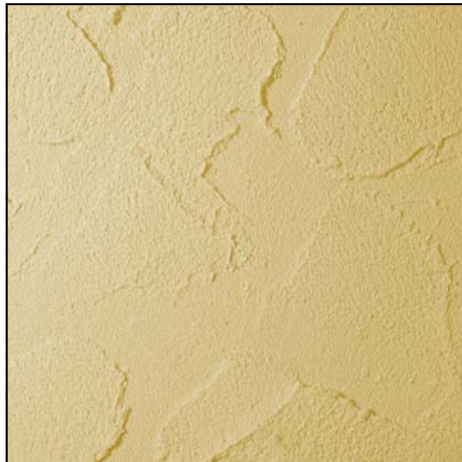
Desert Sand Texture



Spray Texture



R-Coarse Texture



Refinish Texture (varied texture)

**Also Available**  
 Perfect West (Payson Plant)  
 Perfect Fine  
 Spray Fine  
 Refinish Fine  
 Plaster-flex  
 Aggrelime

## Available Options



## Finish Properties

Meets or Exceeds:

- ASTM E84 Surface Burning
- ASTM C67 (AC-24)(EIMA 101.01) Freeze/Thaw
- ASTMD2247 Humidity/Water Resistance
- ASTM D3273 Mold/Mildew
- ASTM D968 Abrasion
- ASTM B117 Salt Spray
- ASTM G53 UV Weathering
- ASTM G23 (G153) UV Weathering

Information contained in this product data sheet conforms to the standard detail recommendations and specifications for the installation of Master Wall Inc. products and is presented in good faith. Master Wall Inc. assumes no liability, expressed or implied as to the architecture, engineering, or workmanship of any project. This information may be concurrent with, or superseded by other applicable documents, such as specifications and details. Contact Master Wall Inc. for the most current product information.

Master Wall Inc.



**Master Wall Inc.**  
 Building a Culture of Excellence

P. O. Box 397  
 Fortson, GA 31808

800-755-0825

Technical 800-760-2861

[masterwall.com](http://masterwall.com)

080112